

Functional differentiation of Celestial Personalities: Parts 7 & 8 Featuring the “Midway Creatures, and Mortal Ascent and The Supreme Being”

UUI Café Friday, November 11, 2022

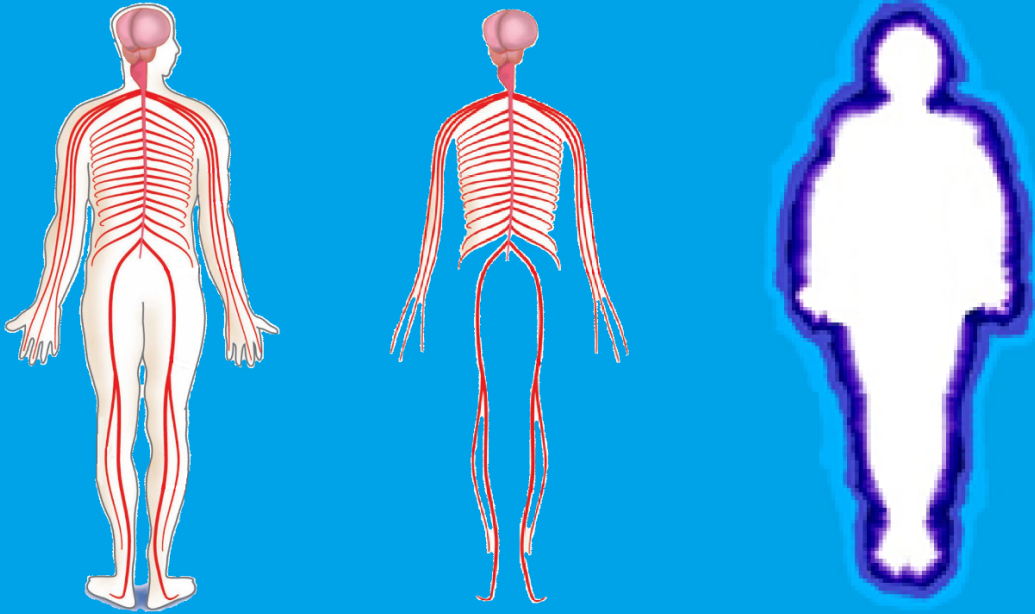
Led by Stuart Kerr

1. The Universal Father
2. The Eternal Mother Son
3. The Infinite Mother Spirit
4. The Creator Son/Mother Spirit Liaison
5. The Material Sons and Daughters
6. The Angelic Hosts
7. Midway Creatures
8. Mortal Ascent and the Supreme Being



7. Midway Creatures

A SECONDARY MIDWAYER



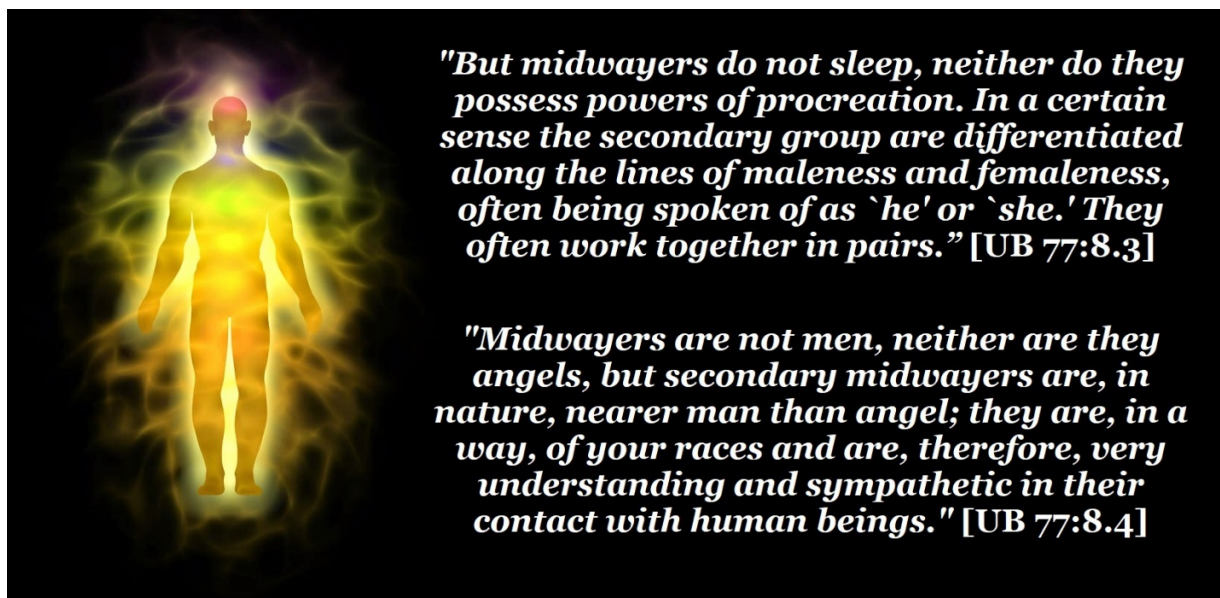
*Primary midwayers resemble angels more than mortals; the secondary orders are much more like human beings. Each renders invaluable assistance to the other in the execution of their manifold planetary assignments. The **PRIMARY MINISTERS** can achieve **LIAISON CO-OPERATION** with both **MORONTIA-** and **SPIRIT-ENERGY CONTROLLERS** and **MIND CIRCUITERS**. The **SECONDARY GROUP** can establish working connections only with the **PHYSICAL CONTROLLERS** and the **MATERIAL-CIRCUIT MANIPULATORS**.
[UB 38:9:8]*

The midway creatures are so called because they are positioned within the ranks of local universe citizenry as being midway between the Material Sons and the

evolutionary mortal creatures. These unique beings are peculiarly difficult to classify as to origin. Here is an insightful description provided by Bill Sadler, Jr. in a recording of his discussions with the OKC study group c.1958-1959:

THE MIDWAYERS – A Description by Bill Sadler, Jr.

Bill: Well, first of all, let's consider what a midwayer looks like. Wilma, can you, uhh,,,. let's have a little imagination. Take a human being and elect to dissolve away all the fat and muscular tissue. I want to keep the brain and nervous system. Here is where a human being really lives, in the brain and nervous system. And a midwayer is a human being minus anything mammalian. So, when I try to think of what a secondary midwayer looks like, I think of the equivalent of a brain and nervous system expressed in living electrical pattern. It's alive so the pattern holds its shape – it resists changes just like an organism resists change. You cut it, it can mend, see. You push this form out of shape, it can go back into shape again, because it's a living pattern. Wilma, that's as far as I can go. I can go to a secondary midwayer because this is a physical reality just as physical as I am, but not cellular. Electricity is physically real, and now I've already got to something which looks so alien and non-human. I can't take the next step and try to visualize a primary midwayer who is spiritual.



These re-corporealized parents of the primary midwayers are composed of voluntary ascendent morontia citizens who were once of supermaterial creature status -- hence, without reproductive prerogative. In their rematerialized bodies, they once again become functional material sex creatures, fully capable of procreating material offspring. Their parental function for producing the primary midwayers via supermaterial, nonsexual liaison is not fully understood.



The order of beings designated the secondary midwayers originates by a combined technique of sexual and nonsexual liaison: "There are no less than twenty-four diverse techniques involved in the production of these secondary midway creatures on the evolutionary worlds of space." [UB 38:9.4]

The order of beings designated the primary midwayers result from the nonsexual, supermaterial creative liaisons of pairs of rematerialized male and female descendent planetary ministers: "Primary midwayers are energized intellectually and spiritually by the angelic technique and are uniform in intellectual status." [UB 38:9.6]

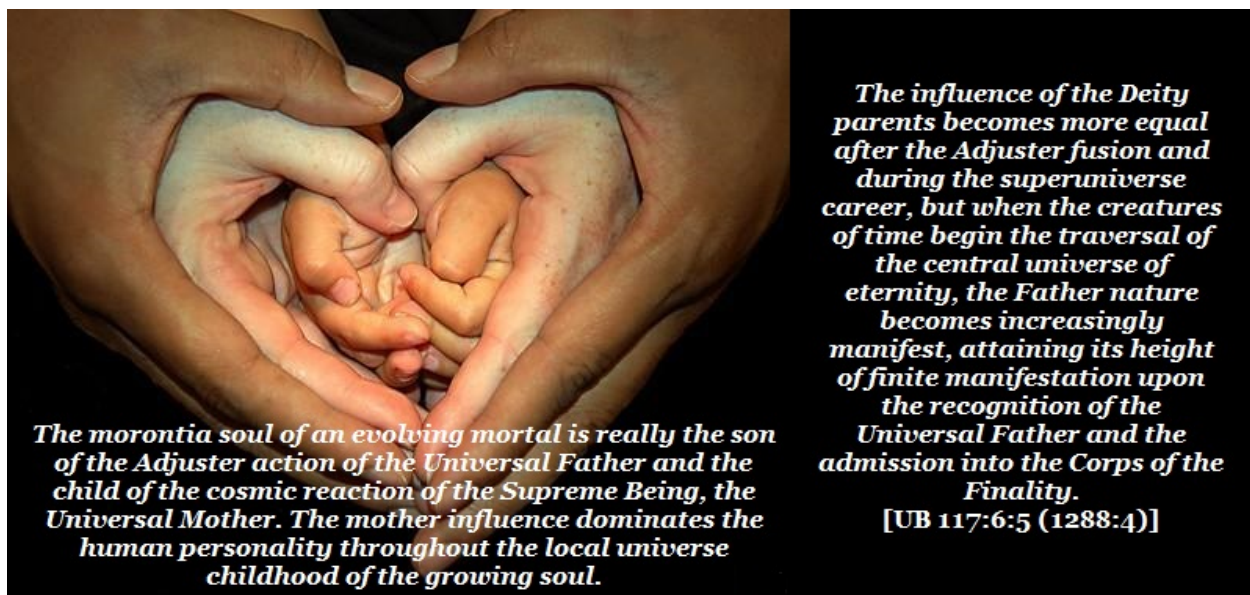
These electrically energized offspring are of a more material nature than are the primary group, and the method of their creation by the Planetary Adams and Eves, or from their immediate progeny, is even more unusual and extraordinary than is the procreative origin of the primary group. As living electrical patterns whose form is inherited from the human bioelectronic pattern of the nervous system, these beings are decidedly of a material affiliation. If you were to take away from a human being all physical organic mass, but you were to leave intact that person's bioelectronic field pattern, you would end up with a residual archetype whose compositional form would best represent that of the secondary midwayer. Their existence is just outside the range of mortal vision. Being that they are void of all mammalian factors, they are endowed with mind that functions on only the top two of the seven complementary adjutants.



The 1,111 loyal secondary midwayers are engaged in important missions on earth. As compared with their primary associates, they are decidedly material. They exist just outside the range of mortal vision and possess sufficient latitude of adaptation to make, at will, physical contact with what humans call "material things." These unique creatures have certain definite powers over the things of time and space, not excepting the beasts of the realm. [UB 77:8.11]

"Secondary midwayers are physically energized by the Adamic technique, spiritually encircuited by the seraphic, and intellectually endowed with the morontia transition type of mind." [UB 38:9.7] The midway creatures remain permanent citizens of the evolutionary worlds on which they originated. These midway creatures work in intimate and effective association with the angelic hosts on the inhabited worlds for the purpose of ministering to mortal beings: "On Urantia the midway ministers are in reality the actual custodians of the planet; they are, practically speaking, the citizens of Urantia. Mortals are indeed the physical and material inhabitants of an evolutionary world, but you are all so short-lived; you tarry on your nativity planet such a short time. You are born, live, die, and pass on to other worlds of evolutionary progression." [UB 37:9.11]

8. Mortal Ascent and the Supreme Being



The soul of the mortal being is that spiritual reality of the higher self that is a co-creation of the cooperative interaction of the human will with a fragment of the Universal Father, the Thought Adjuster, that indwells the mortal mind. As we choose to do the will of the Father, as we accept the supreme challenge of Paradise perfection, this choice-action repercusses in the evolving growth of the soul. It is by virtue of this soul-vehicle that mortal beings are capable of resurrection as morontia beings on the mansion words. In reality, this soul is our higher and advancing self, our better morontial and future spiritual self. As we are the human parent of our resurrected selves, the Universal Father, by virtue of his Adjuster presence, is the divine parent of this future ascending son.

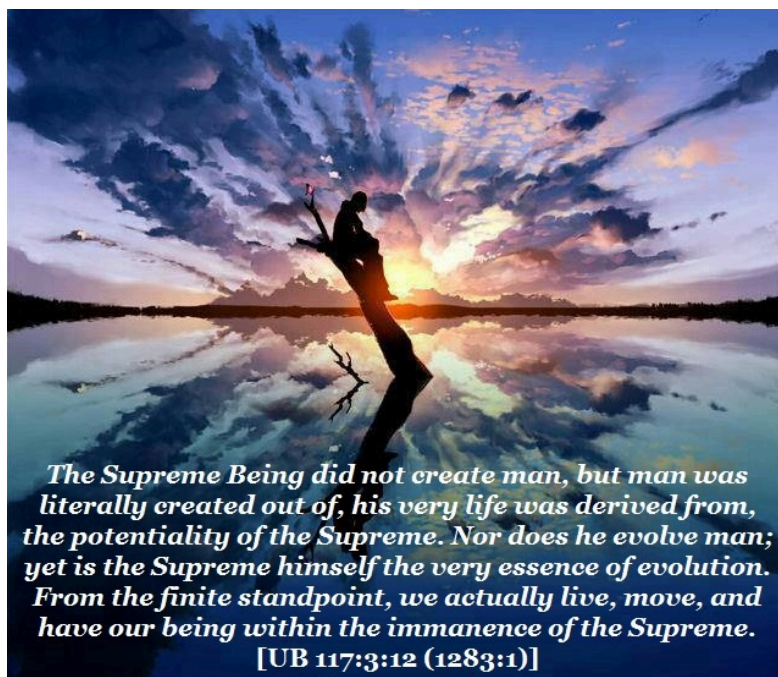
The Universal Father sets the cosmic stage for our spiritual ascension as a finite reality; it is conditioned by time and space, it has a beginning and it has a fore-ordained destiny. This creation is experiential -- events occur in time-conditioned sequences, and they are constrained within limiting spatial boundaries. The reality of the finite cosmos

originates within the eternal purposes of the Universal Father. These purposes are brought to fruition in time and space, and the total and evolved finite is culminated in the Deity of the Supreme. The Supreme is the great avenue through which the love of the Father flows outward to all creation, and the Supreme is the great avenue through which finite creatures pass inward in their quest of the Father, who is love.

The actualizing Supreme Being of time and space expands with the evolutionary universes and identifies with all creature growth. She grows as we grow and we grow as an integral part of her growth. In our ascending careers as universe creatures, we are faithfully nurtured by our divine Mother, the Supreme: "All soul-evolving humans are literally the evolutionary sons of God the Father and God the Mother, the Supreme Being."

[UB 117:9.8]

As the Supreme Being evolves within the grand universe, all finite reality within the grand universe grows with her. When this process reaches full completion in the far-distant future, when all growth within the Supreme is forever exhausted, the Supreme will have actualized as a contactable person of Deity that we all perceive and know. Finite experience as such will end.



After Adjuster fusion, and as we proceed with our progressive and experiential universe careers, the influence of the Universal Father begins to become increasingly manifest -- his influence increasingly beckons to us as we traverse the central universe of eternity towards Paradise. Upon admission to the Corps of the Finality, a mortal ascender attains perfected status as "...the eternal finaliter son of the Paradise Father as well as the

eternal universe child of the Mother Supreme." [UB: 117:6.7] Upon our realization of perfected self will as "sixth-stage" -- finaliters on Paradise, we will resume our universe careers in the assistance of the actualizing Supreme Being towards the perfecting of the evolving superuniverse of time and space into unified light and life. It is here where we will begin to fully realize within our perfected natures both our debt to the mother inheritance of the Supreme as well as our indebtedness to the maternal qualities of the Eternal Mother Son and the Infinite Mother Spirit.

