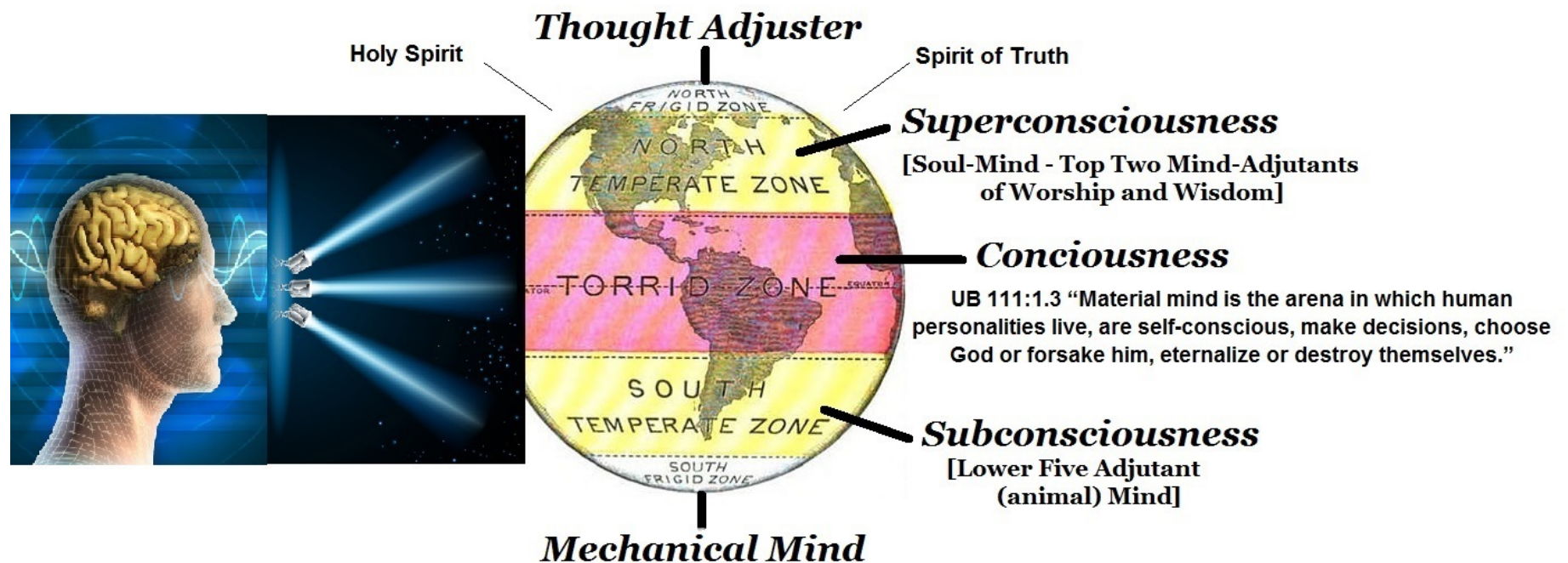


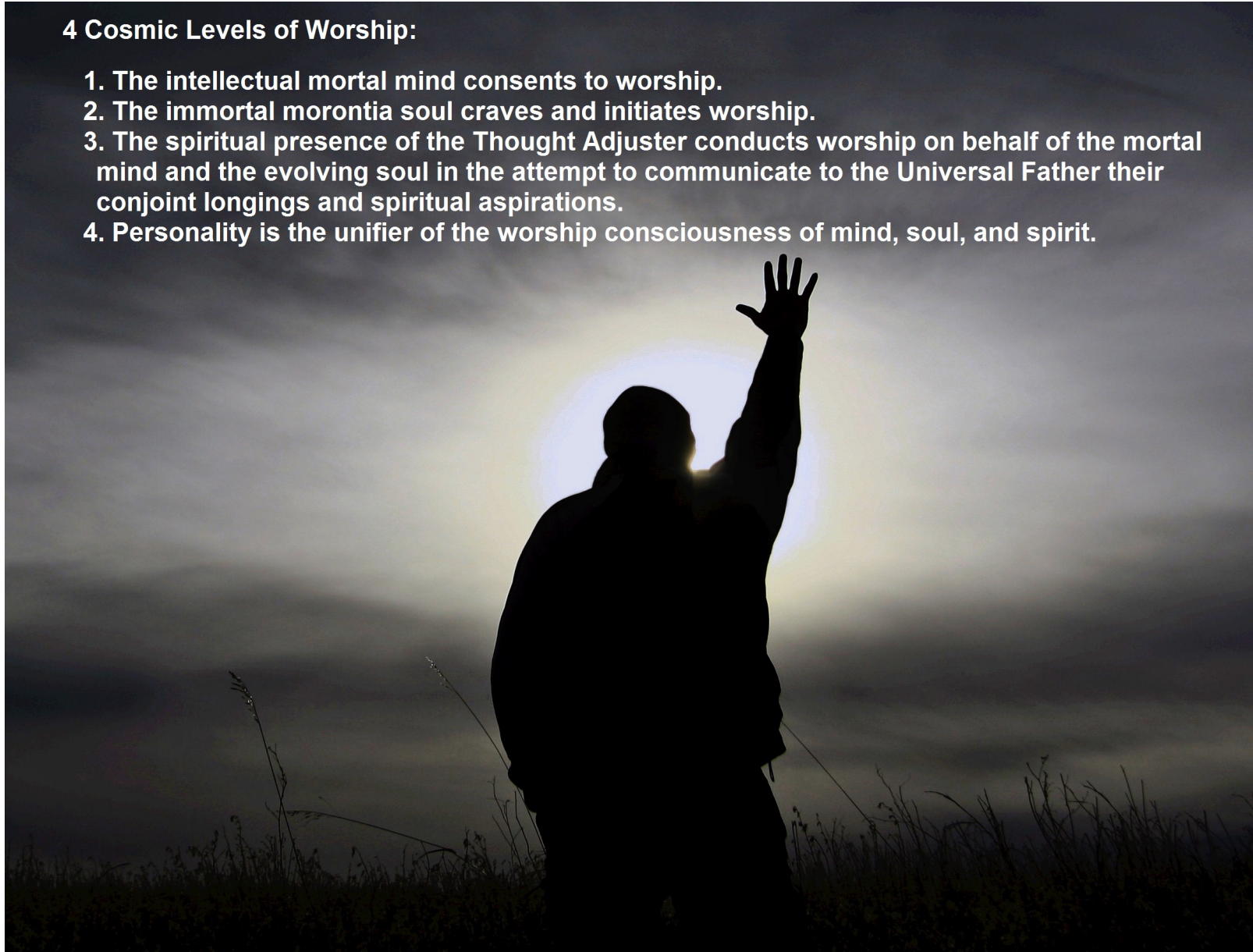
Topic Images of Stuart Kerr

Bill Sadler Jr.'s Concept of the Human Mind



4 Cosmic Levels of Worship:

- 1. The intellectual mortal mind consents to worship.**
- 2. The immortal morontia soul craves and initiates worship.**
- 3. The spiritual presence of the Thought Adjuster conducts worship on behalf of the mortal mind and the evolving soul in the attempt to communicate to the Universal Father their conjoint longings and spiritual aspirations.**
- 4. Personality is the unifier of the worship consciousness of mind, soul, and spirit.**



A vibrant cosmic background image featuring a dense field of galaxies, nebulae, and star clusters. The colors range from deep blues and purples to bright oranges and reds, with a central bright white/yellow region. The text and list are overlaid on this image.

COSMIC MIND

- **Cosmic mind encompasses all finite-mind levels.**
- **Cosmic mind coordinates experientially with the evolutionary-deity level of the Supreme Mind.**
- **Cosmic mind coordinates transcendentally with the existential levels of absolute mind (the direct circuits of the Conjoint Actor).**

God Consciousness: 3 differential levels of reality realization:


- 1. Mind consciousness - the comprehension of the idea of God.*
- 2. Soul Consciousness - the realization of the ideal of God.*
- 3. Spirit consciousness - the realization of the spirit reality of God.*





HAVONA MIND

- The mind laboratory of the creators of cosmic mind and the ministers to every creature mind in existence.
- The pattern for all spiritual and material creature intellects.
- The perfect home and retreat for the untiring Mind Ministers of time and space.
- The mind graduate schools for all beings destined for Paradise society.



*In the beginning,
all creation was void and empty.
From the boundless and formless swell of Eternity,
the Infinite identified itself,
saying only,
"I Am."*

*The I Am,
by this eternity act of absolute free will,
is revealed as the primal expression of self-willed and personal God.
This eternity escape from the confines of static infinity
brings into being the dynamic expression of
his creative will.*

*God,
as divine personality,
is free to exercise his expressive and dynamic
creativity.
He reveals himself to his self-willed creation
as the divine and Universal Father
of all personality.*



LIVING MIND

- 1. Mechanical (non-teachable) mind - ministry of the Master Physical Controllers.***
- 2. Creature (adjutant) mind - exclusive domain of the seven adjutant mind-spirits as ministered by the local universe Mother Spirit.***
- 3. Supermind - encircuited in the spirit cycles of the local universe Mother Spirit.***

THE 3 MIND LEVELS UNDERLYING LIFE PRODUCTION AND EVOLUTION

- 1. The physical-energy domain of material mind - enhanced mind capacity production.***
- 2. The mind ministry of the adjutant spirits - enhanced potential for spirit capacity.***
- 3. The spirit endowment of mortal mind - Thought Adjuster bestowal.***



PARADISE IS:

- **The co-ordinate but antipodal revelation of the Universal Father-Force (in contradistinction to the spirit-person of the Eternal Son).**
- **The center of all creation.**
- **The Absolute of the material-gravity control of the First Source and Center.**
- **The place of primal personality origin (the Universal Father, the Eternal Son, the Infinite Spirit).**
- **The absolute of pattern potentials, of which Havona is an eternal and perfect exhibit.**
- **The source of all universe physical energies, of all non-spiritual/non-mindal realities.**
- **The source of time and space (wherein all creation takes place and by virtue of which motion is related to space and sequence becomes comprehensible to finite beings).**
- **The source of space potency (from which all materialization is derived).**

PARADISE SONS

1. CREATOR SONS – The Michaels [Father-Son liaison]

- Combining the love of the Universal Father and the mercy of the Eternal Son.
- As the Fathers of the local universe creations, they portray the infinite character of the Universal Father.
- Revelatory of the Will of God (fatherly relationship with universe personalities).
 1. Creative Power
 2. Loving Ministry
 3. Understanding Sovereignty

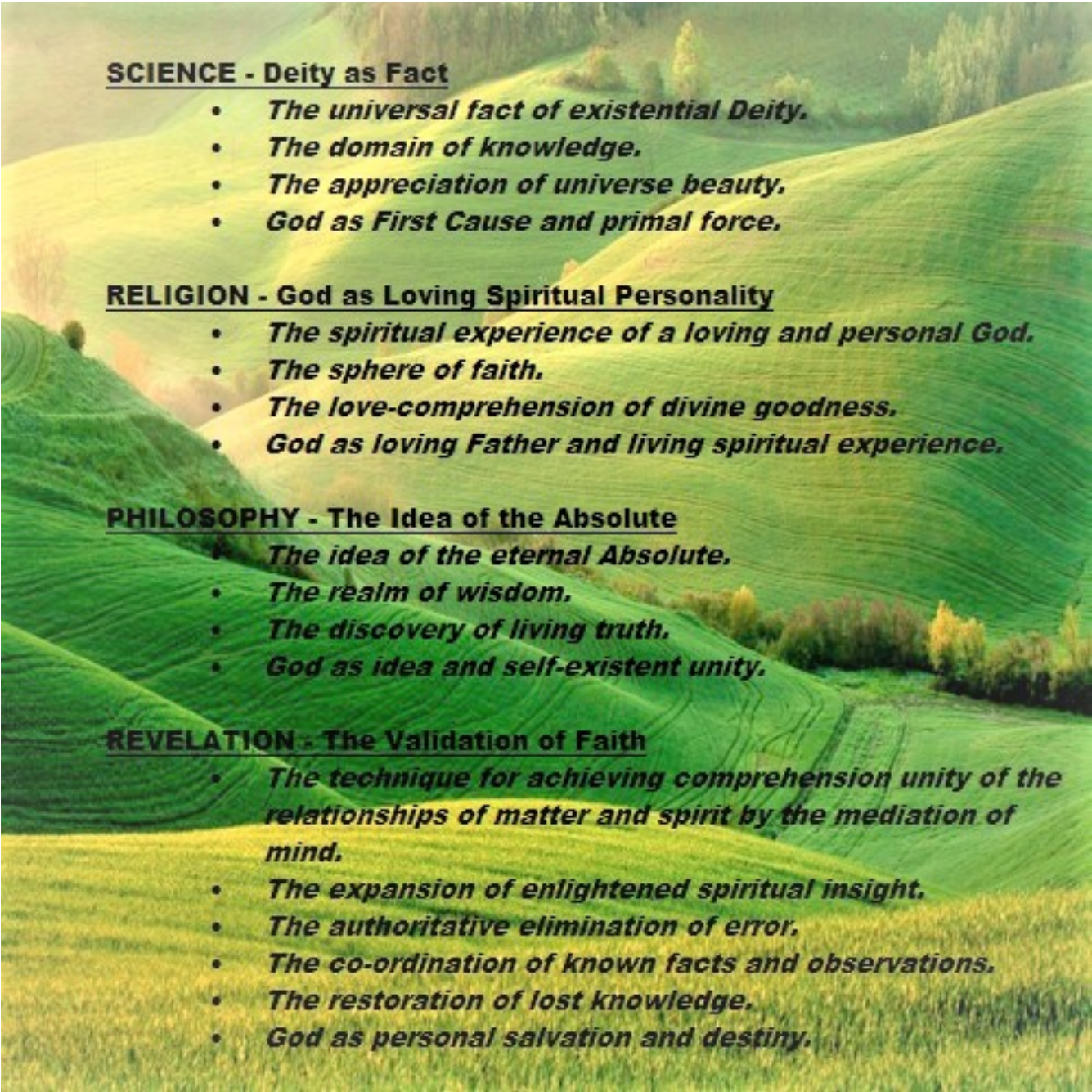
2. MAGISTERIAL SONS – The Avonals [Son-Spirit liaison]

- Combining the mercy of the Eternal Son and the ministry of the Infinite Spirit.
- As the bestowal Sons of mercy, they reveal the infinite compassion of the Eternal Son.
- Revelatory of the Law of God.
 1. Judgment
 2. Service
 3. Bestowal

3. TRINITY TEACHER SONS - The Daynals [Father-Son-Spirit liaison]

- Combining the love (Father), mercy (Son), ministry (Spirit) of the three Paradise Deities.
- As the true teachers of ascending personalities, they disclose the teacher personality of the Infinite Spirit.
- Revelatory of the Nature of God (his infinite love).
 1. Living Truth
 2. Divine Goodness
 3. True Spiritual Beauty





SCIENCE - Deity as Fact

- *The universal fact of existential Deity.*
- *The domain of knowledge.*
- *The appreciation of universe beauty.*
- *God as First Cause and primal force.*

RELIGION - God as Loving Spiritual Personality

- *The spiritual experience of a loving and personal God.*
- *The sphere of faith.*
- *The love-comprehension of divine goodness.*
- *God as loving Father and living spiritual experience.*

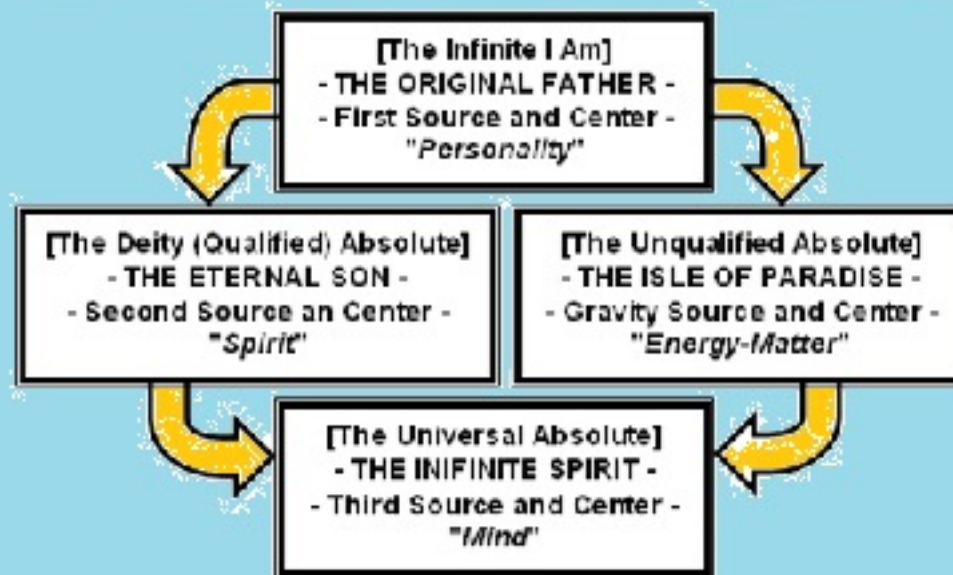
PHILOSOPHY - The Idea of the Absolute

- *The idea of the eternal Absolute.*
- *The realm of wisdom.*
- *The discovery of living truth.*
- *God as idea and self-existent unity.*

REVELATION - The Validation of Faith

- *The technique for achieving comprehension unity of the relationships of matter and spirit by the mediation of mind.*
- *The expansion of enlightened spiritual insight.*
- *The authoritative elimination of error.*
- *The co-ordination of known facts and observations.*
- *The restoration of lost knowledge.*
- *God as personal salvation and destiny.*

SOURCES AND CENTERS





Regeneration

I tell you the truth, no one can enter the kingdom of God unless he is born of water and the Spirit. Flesh gives birth to flesh, but the Spirit gives birth to spirit.

[John 3:5,6]

Flesh and blood cannot inherit the kingdom of God.

[1Cor. 15:50]

For the perishable must clothe itself with the imperishable, and the mortal with immortality.

[1Cor. 15:53]

The Supreme Being provides three basic functions for the benefit of mortal man:

- 1. He is the unifier of time-space divinity in God the Sevenfold.**
- 2. He is the maximum of Deity comprehensible by finite creatures.**
- 3. He is the only avenue of approach for mortal man to transcend finite reality in his exploration of superfinite reality and the search for the Ultimate.**





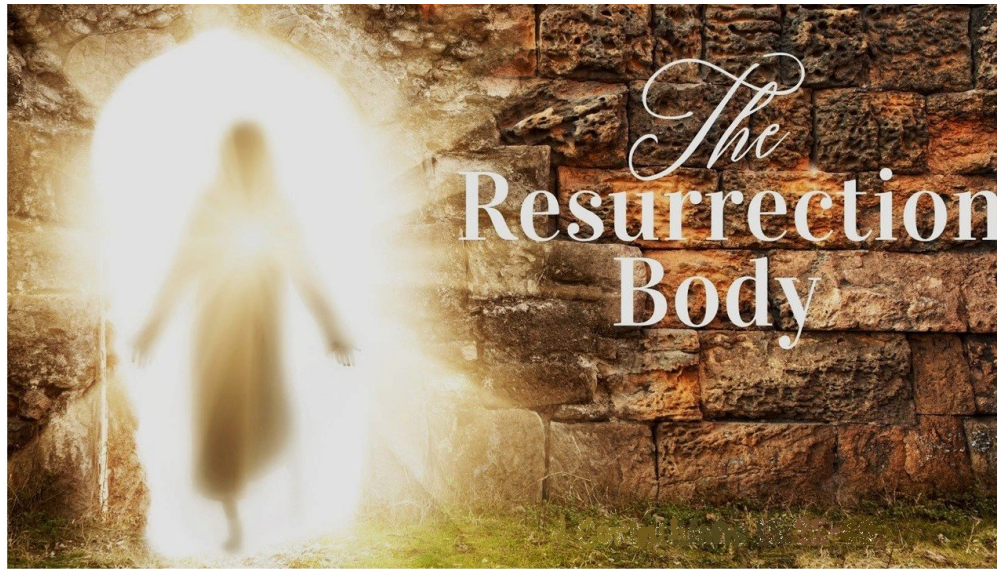
All **TRINITY-EMBRACED SONS** are originally of **DUAL OR SINGLE ORIGIN**, but subsequent to the Trinity embrace they are **FOREVER DEVOTED TO TRINITY SERVICE AND ASSIGNMENT**. This corps, as revealed and as organized for superuniverse service, embraces **SEVEN ORDERS OF PERSONALITIES**:

1. **MIGHTY MESSENGERS** - Rebellion tested of proven universe allegiance.
 2. **THOSE HIGH IN AUTHORITY**- Superior administrative ability, executive genius.
 3. **THOSE WITHOUT NAME AND NUMBER** - Skilled ability to worship.
 4. **TRINITIZED CUSTODIANS** - Ascendant seraphim and translated midway creatures.
 5. **TRINITIZED AMBASSADORS** - Spirit- and Son-Fused mortals of superior minds.
 6. **CELESTIAL GUARDIANS** - Creature-trinitized Sons having served with Trinity Teacher Sons
 7. **HIGH SON ASSISTANTS** - Retrinitized trinitized Sons and associated Paradise Havona personalities.
- ← **TRINITIZED SONS OF ATTAINMENT**
(Father-fused mortal ascenders)

← **TRINITIZED SONS OF SELECTION**

← **TRINITIZED SONS OF PERFECTION**

These seven groups of personalities are further classified, according to origin, nature, and function, into three major divisions: the **TRINITIZED SONS OF ATTAINMENT**, the **TRINITIZED SONS OF SELECTION**, and the **TRINITIZED SONS OF PERFECTION**. [UB 22:1:1-9]



*The **PHYSICAL BODY** of mortal flesh is not a part of the reassembly of the sleeping survivor; the **PHYSICAL BODY** has returned to dust. THE SERAPHIM OF ASSIGNMENT **SPONSORS** THE **NEW BODY**, the **MORONTIA FORM**, as the new **LIFE VEHICLE** for THE IMMORTAL SOUL AND FOR THE INDWELLING OF THE RETURNED ADJUSTER.*
[UB 30:4.15]

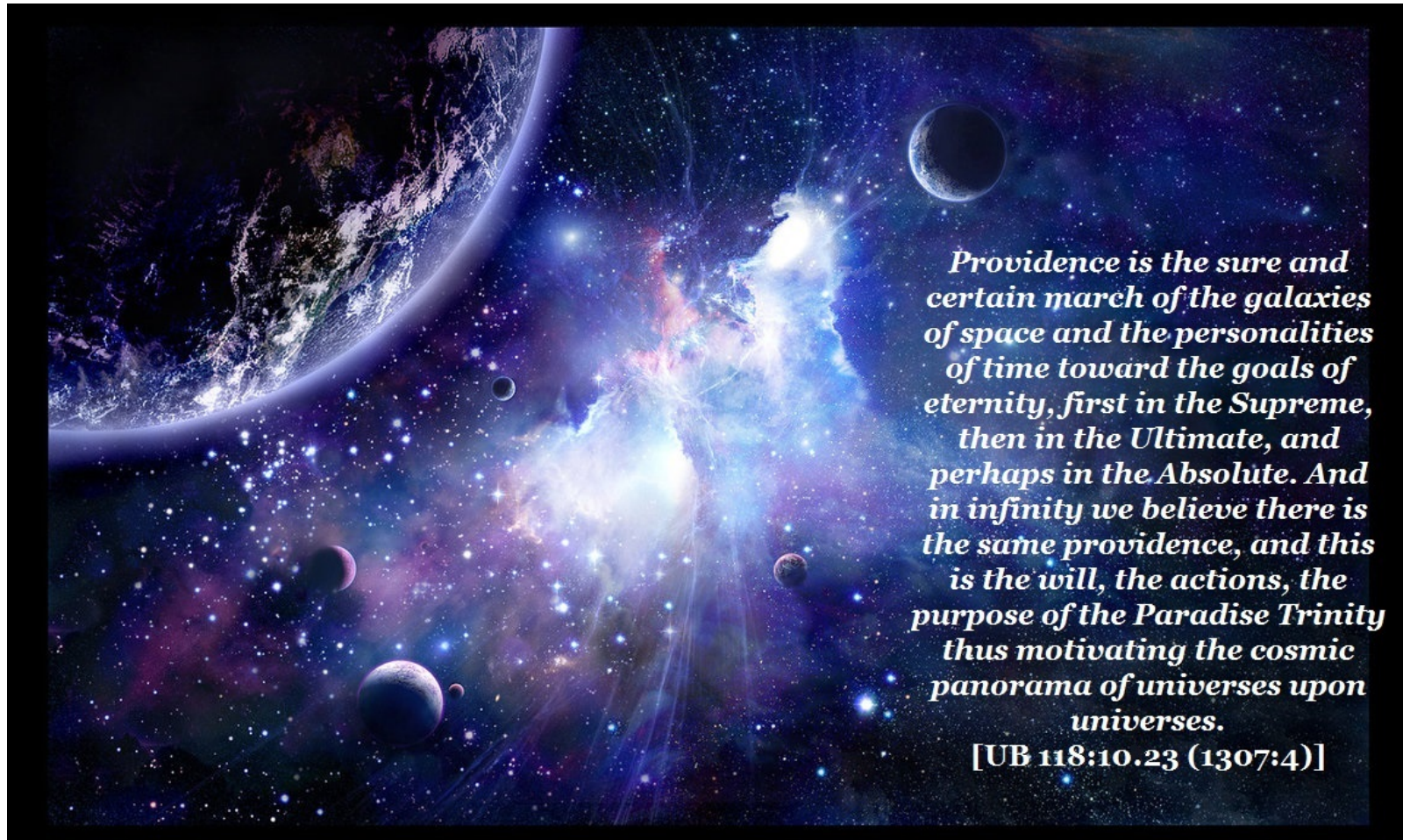
*The MORONTIA POWER SUPERVISORS **SPONSOR**, and the ATTENDING SERAPHIM **PROVIDE**, THE **UNDIFFERENTIATED MORONTIA MATERIAL** wherewith the morontia life can begin to work. [UB 42:12.11]*
*It is indeed an epoch in the career of an ascending mortal, THIS FIRST **AWAKENING** ON THE SHORES OF THE MANSION WORLD; there, FOR THE FIRST TIME, ACTUALLY TO **SEE** YOUR LONG-LOVED AND EVER-PRESENT **ANGELIC COMPANIONS** OF EARTH DAYS [UB 113:7.1]*



*Your conventional idea of angels has been derived in the following way: During moments just prior to **PHYSICAL DEATH** a reflective phenomenon sometimes occurs in the human mind, and this dimming consciousness seems to **VISUALIZE** something of **THE FORM OF THE ATTENDING ANGEL**, and this is immediately translated into terms of the habitual concept of angels held in that individual's mind. [UB 39:5.11]*



There is a providence in the evolving universes, and it can be discovered by creatures to just the extent that they have attained capacity to perceive the purpose of the evolving universes. [UB 118:10:10 (1305:5)]



Providence is the sure and certain march of the galaxies of space and the personalities of time toward the goals of eternity, first in the Supreme, then in the Ultimate, and perhaps in the Absolute. And in infinity we believe there is the same providence, and this is the will, the actions, the purpose of the Paradise Trinity thus motivating the cosmic panorama of universes upon universes.

[UB 118:10.23 (1307:4)]

*When you once begin to FIND GOD IN **YOUR SOUL**, presently you will begin to DISCOVER HIM IN **OTHER MEN'S SOULS** and eventually in all the creatures and creations of a mighty universe. [UB 155:6.13]*

SOUL COMMUNITY


THE EMPOWERING LOVE OF A GROUP SOUL



*Jesus, still standing, then said to the twelve: “You are my chosen ambassadors, but I know that, in the circumstances, you could not entertain this belief as a result of mere human knowledge. This is a revelation of **THE SPIRIT OF MY FATHER** to your inmost **SOULS**.... upon this foundation will I build the **BROTHERHOOD OF THE KINGDOM OF HEAVEN**.... to you and your successors I now deliver the keys of the outward kingdom—the authority over things temporal—THE **SOCIAL AND ECONOMIC FEATURES OF THIS ASSOCIATION OF MEN AND WOMEN AS FELLOWS OF THE KINGDOM.**” [UB 157:4.5]*



UNION OF SOULS—THE MOBILIZATION OF WISDOM. *Every human being sooner or later acquires a certain concept of this world and a certain vision of the next.* NOW IT IS POSSIBLE, THROUGH **PERSONALITY ASSOCIATION**, TO UNITE THESE VIEWS OF TEMPORAL EXISTENCE AND ETERNAL PROSPECTS. THUS DOES THE **MIND OF ONE** AUGMENT ITS **SPIRITUAL VALUES** BY GAINING MUCH OF **THE INSIGHT OF THE OTHER**. IN THIS WAY **MEN ENRICH THE SOUL BY POOLING THEIR RESPECTIVE SPIRITUAL POSSESSIONS**. *Likewise, in this same way, man is enabled to avoid that ever-present tendency to fall victim to distortion of vision, prejudice of viewpoint, and narrowness of judgment. Fear, envy, and conceit can be prevented only by intimate contact with other minds.* [\[UB 160:2.7\]](#)

A cosmic scene with a bright sun in the upper right, a comet streaking across the sky, and a planet in the lower left. The background is filled with stars and nebulae.

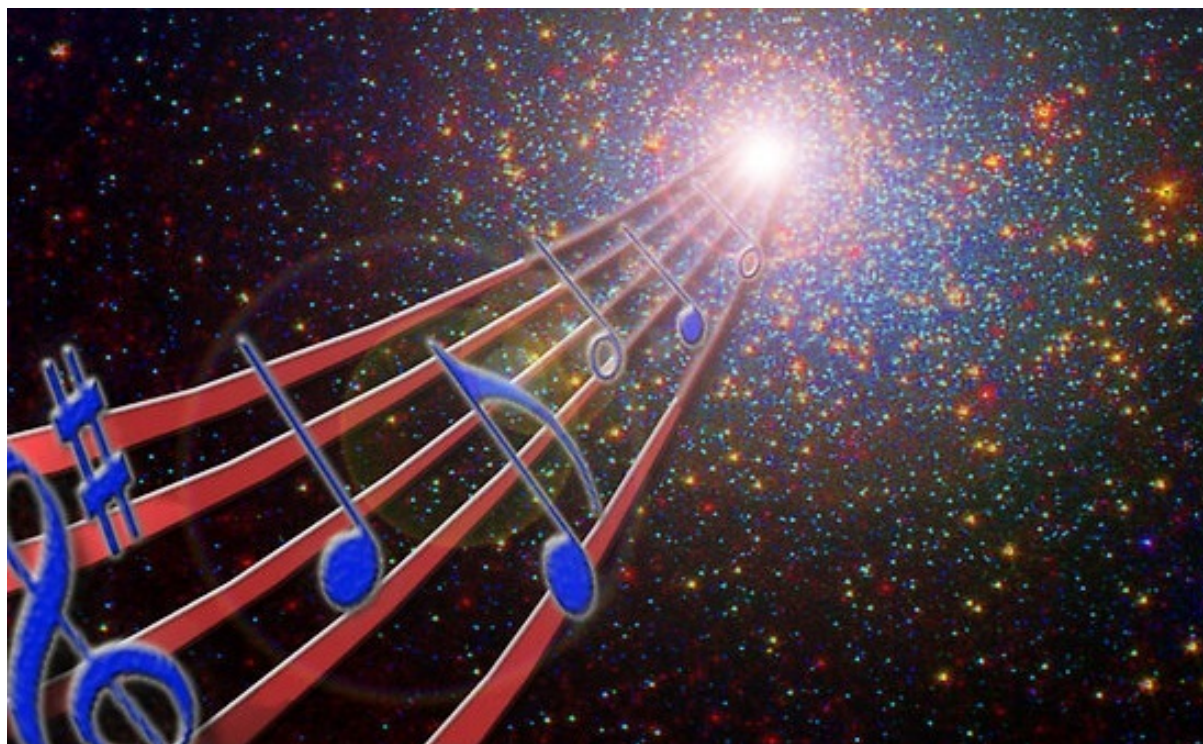
Human beings unfailingly become discouraged when they view only the transitory transactions of time. The present, when divorced from the past and the future, becomes exasperatingly trivial. Only a glimpse of the circle of eternity can inspire man to do his best and can challenge the best in him to do its utmost. And when man is thus at his best, he lives most unselfishly for the good of others, his fellow sojourners in time and eternity.

[UB 160:2:9 (1776:3)]



I [an Archangel of Nebadon] cannot, with exclusive spirit vision, perceive the building in which this narrative is being translated and recorded. A Divine Counselor from Uversa who chances to stand by my side perceives still less of these purely material creations. We discern how these material structures appear to you by viewing a spirit counterpart presented to our minds by one of our attending energy transformers. This material building is not exactly real to me, a spirit being, but it is, of course, very real and very serviceable to material mortals.

[UB 44:0.9]



*It is literally true, "melody has power a
whole world to transform." Forever,
music will remain the universal
language of men, angels, and spirits.
Harmony is the speech of Havona.
[UB 44:1.8]*

Cosmic Energy



*The power charge of a superuniverse consists of **THREE PHASES OF ENERGY OF TEN SEGREGATIONS EACH**. This threefold energy charge spreads throughout the space of the grand universe; it is like a vast moving ocean of energy which engulfs and bathes the whole of each of the seven supercreations. [UB 29:2.14]*

*[Mechanical Controllers] They are expert in the manipulation of **TWENTY-ONE of THE THIRTY PHYSICAL ENERGIES OF SPACE**, constituting THE POWER CHARGE OF A SUPERUNIVERSE. They are also able to accomplish much towards THE MANAGEMENT AND CONTROL OF **SIX OF THE NINE MORE SUBTLE FORMS OF PHYSICAL ENERGY**. [UB 29:4.20]*

*[ENERGY TRANSFORMERS] are actually able to CHANGE THE FORM AND POTENTIAL OF **TWENTY-SEVEN OF THE THIRTY PHYSICAL ENERGIES OF THE SUPERUNIVERSE POWER CHARGE**. [UB 29:4.25]*

**MEN MAY DECEIVE YOU BY YOUR OUTWARD SERVICE,
BUT GOD LOOKS INTO YOUR SOULS [UB 167:5.1]**



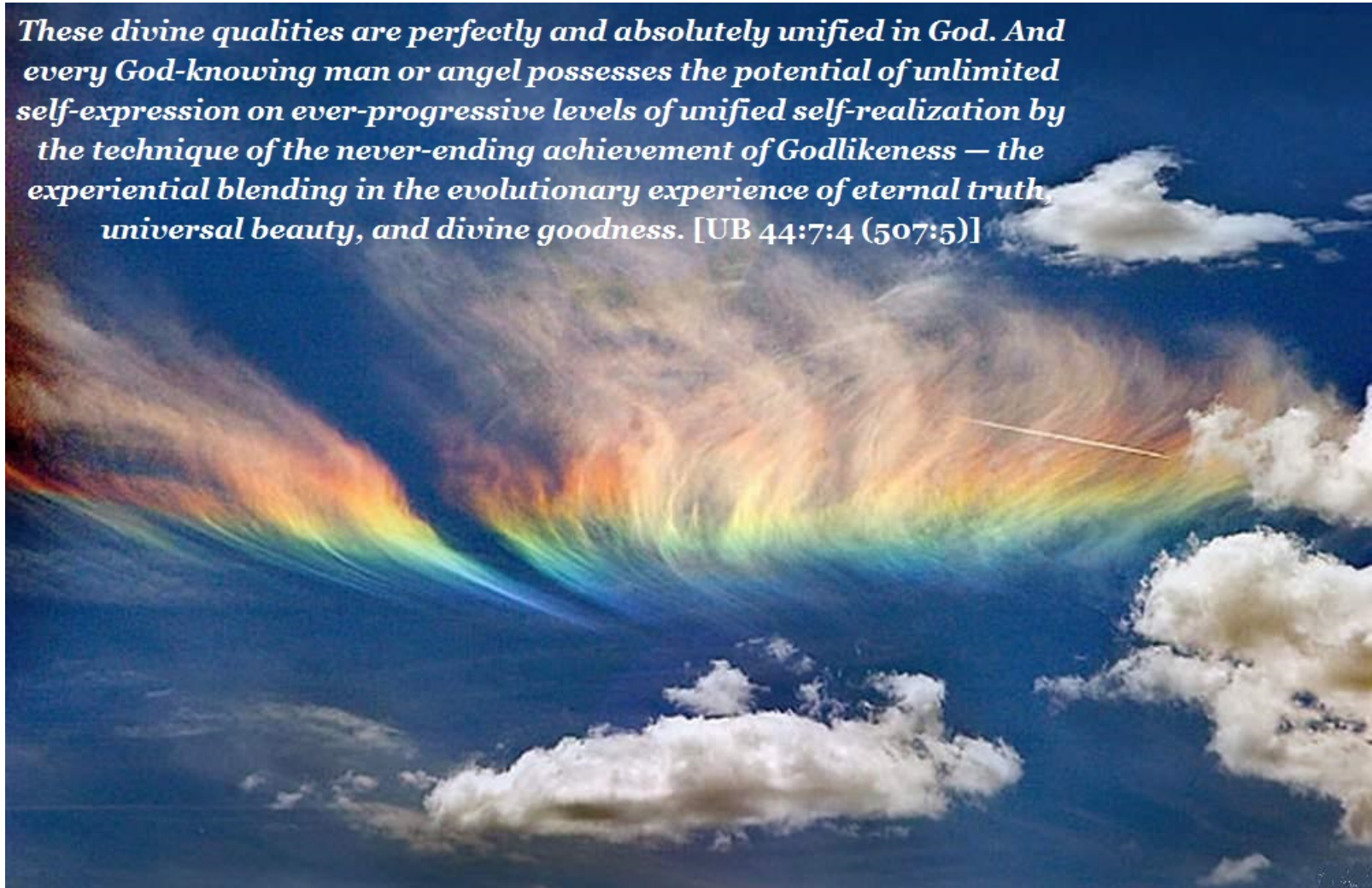
JESUS **PERCEIVED** THE ATTEMPT OF **THE WOMAN'S SOUL** TO AVOID DIRECT AND SEARCHING CONTACT WITH ITS MAKER, BUT HE ALSO SAW THAT THERE WAS **PRESENT IN HER SOUL** A DESIRE TO KNOW THE BETTER WAY OF LIFE. [UB 143:5.6]

THE MASTER **WELL KNEW** THAT MANY OF HIS FOLLOWERS WERE SLOWLY BUT SURELY PREPARING THEIR MINDS FINALLY TO REJECT HIM. HE **LIKewise KNEW** THAT MANY OF HIS DISCIPLES WERE SLOWLY BUT CERTAINLY PASSING THROUGH THAT TRAINING OF MIND AND THAT **DISCIPLINE OF SOUL** WHICH WOULD ENABLE THEM TO TRIUMPH OVER DOUBT AND COURAGEOUSLY TO ASSERT THEIR FULL-FLEDGED FAITH IN THE GOSPEL OF THE KINGDOM.

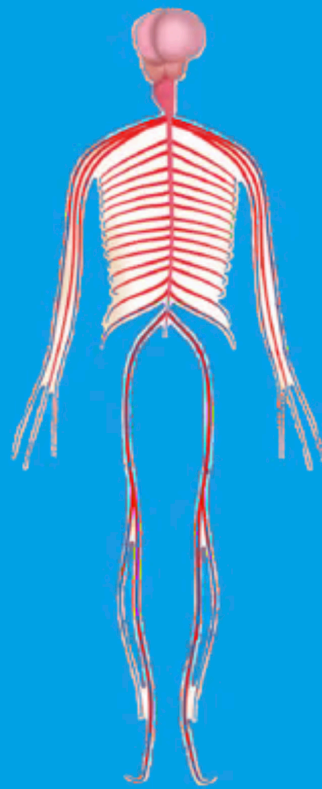
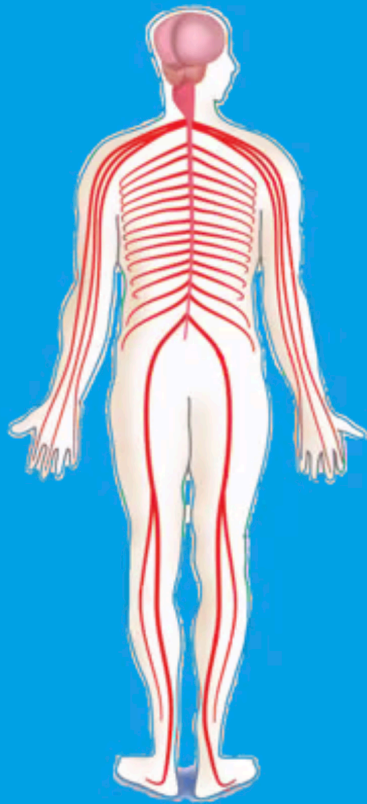
[UB 153:1.3]

*Then went Jesus over to where the sick man sat and, taking him by the hand, said: "Arise and go your way. You have not asked to be healed, but I **KNOW** THE DESIRE OF YOUR **HEART** AND THE FAITH OF YOUR **SOUL**."* [UB 167:1.5]

These divine qualities are perfectly and absolutely unified in God. And every God-knowing man or angel possesses the potential of unlimited self-expression on ever-progressive levels of unified self-realization by the technique of the never-ending achievement of Godlikeness — the experiential blending in the evolutionary experience of eternal truth, universal beauty, and divine goodness. [UB 44:7:4 (507:5)]



A SECONDARY MIDWAYER



Seraphim are created by the Universe Mother Spirit and have been projected in unit formation — 41,472 at a time — ever since the creation of the “pattern angels” and certain angelic archetypes in the early times of Nebadon.

[UB 38:1:1]

COUNTING ANGELS



$$41,472 = 2 \times 2 \times 2 \times 2 \times 2 \times 2 \times 2 \times 2 \times 2 \times 3 \times 3 \times 3 \times 3$$

$$= 2^9 \times 3^4$$

$$= (2^3)^3 \times (3^2)^2$$

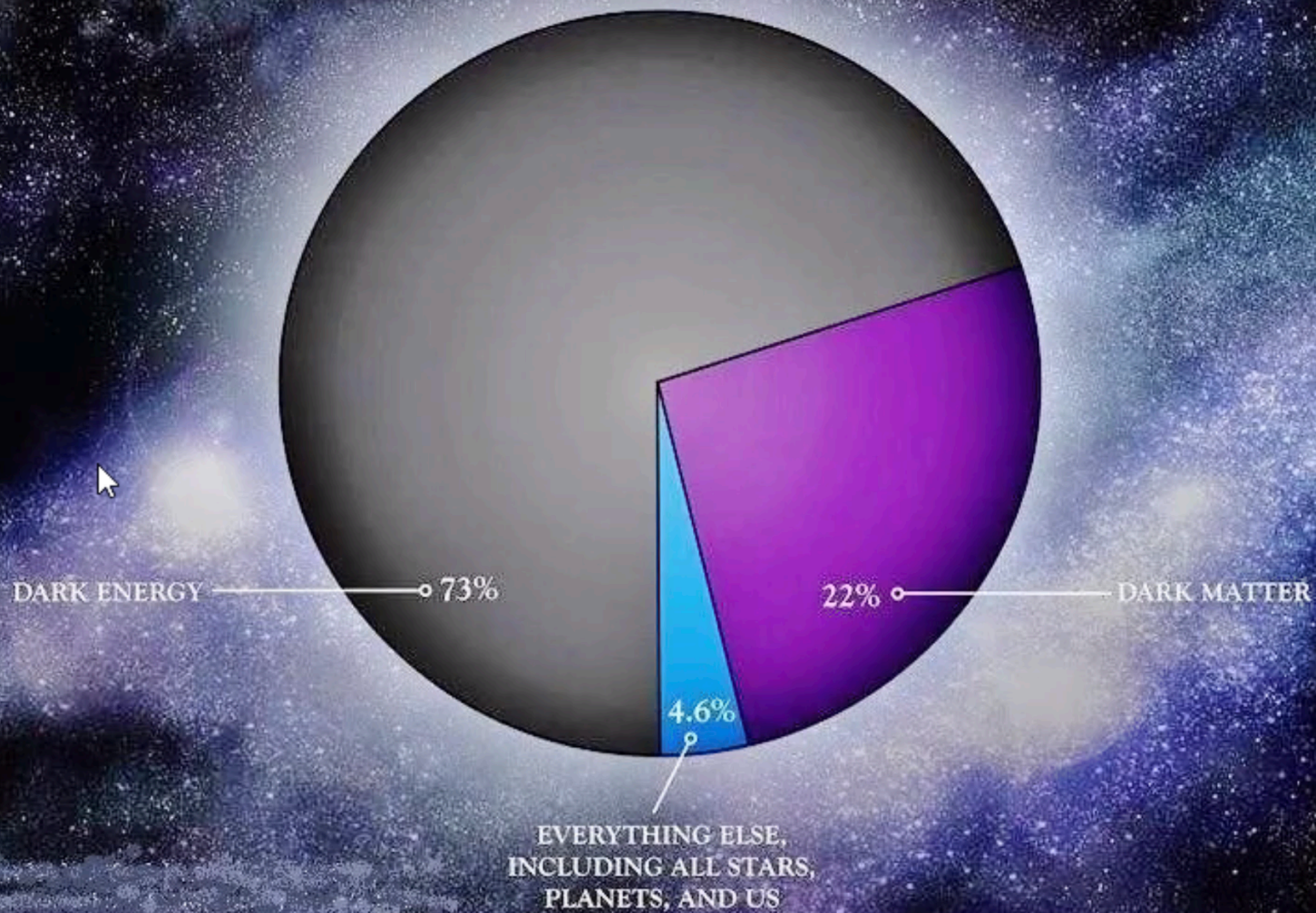
Jesus alluded to such a group of angels that night in the garden of Gethsemane when he said: "I can even now ask my Father, and he will presently give me more than twelve legions of angels." [UB 38:6:1 (421:4)]



Counting the Angels [UB 38:6:1,2 (421:4,5)]

- *Groups of Twelve (12 pairs, 24 seraphim)*
- *Twelve Groups=Company (144 pairs, 288 seraphim)*
- *Twelve Companies=Battalion (1,728 pairs, 3,456 seraphim)*
- *Twelve Battalions=Seraphic Unit (20,736 pairs, 41,472 seraphim)*
- *Twelve Units=Legion (248,832 pairs, 497,664 seraphim)*
- *Twelve Legions=Host (2,985,984 pairs, 5,971,968 seraphim)*
- *Twelve Hosts=Angelic Army (35,831,808 pairs, 71,663,616 seraphim)*

Energy Distribution of the Universe



PARADISE SONS

1. CREATOR SONS – The Michaels [Father-Son liaison]

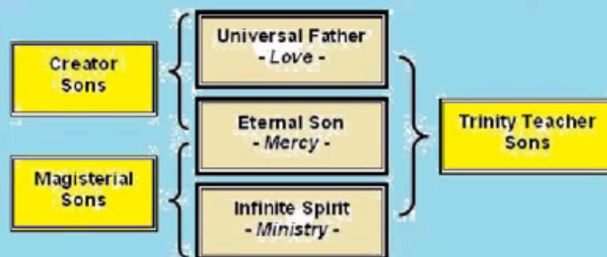
- Combining the love of the Universal Father and the mercy of the Eternal Son.
- As the Fathers of the local universe creations, they portray the infinite character of the Universal Father.
- Revelatory of the Will of God (fatherly relationship with universe personalities).
 1. Creative Power
 2. Loving Ministry
 3. Understanding Sovereignty

2. MAGISTERIAL SONS – The Avonals [Son-Spirit liaison]

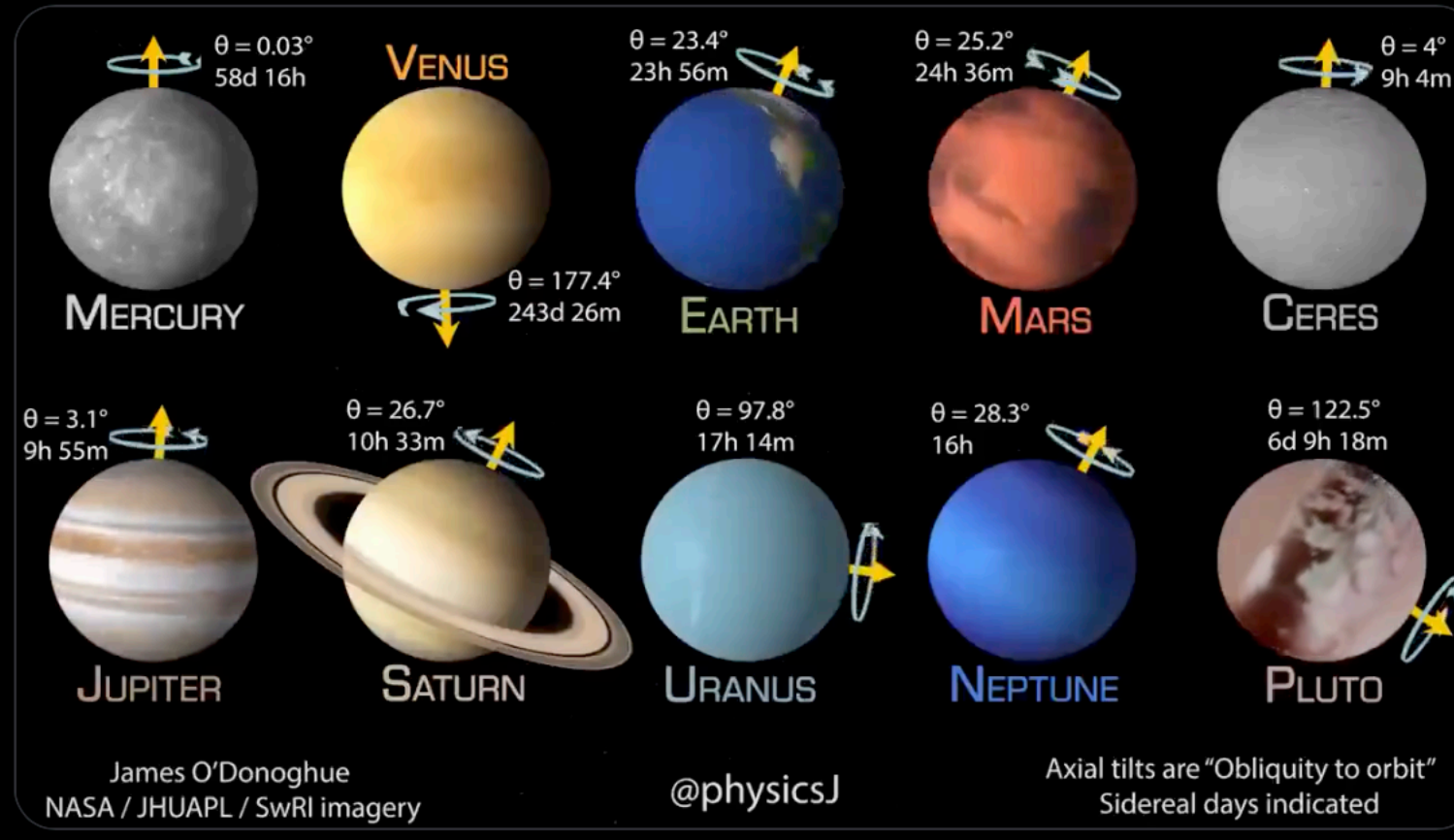
- Combining the mercy of the Eternal Son and the ministry of the Infinite Spirit.
- As the bestowal Sons of mercy, they reveal the infinite compassion of the Eternal Son.
- Revelatory of the Law of God.
 1. Judgment
 2. Service
 3. Bestowal

3. TRINITY TEACHER SONS - The Daynals [Father-Son-Spirit liaison]

- Combining the love (Father), mercy (Son), ministry (Spirit) of the three Paradise Deities.
- As the true teachers of ascending personalities, they disclose the teacher personality of the Infinite Spirit.
- Revelatory of the Nature of God (his infinite love).
 1. Living Truth
 2. Divine Goodness
 3. True Spiritual Beauty



This is how planets of the solar system rotate





All **TRINITY-EMBRACED SONS** are originally of DUAL OR SINGLE ORIGIN, but subsequent to the Trinity embrace they are FOREVER DEVOTED TO TRINITY SERVICE AND ASSIGNMENT. This corps, as revealed and as organized for superuniverse service, embraces SEVEN ORDERS OF PERSONALITIES:

1. **MIGHTY MESSENGERS** - Rebellion tested of proven universe allegiance.
2. **THOSE HIGH IN AUTHORITY**- Superior administrative ability, executive genius.
3. **THOSE WITHOUT NAME AND NUMBER** - Skilled ability to worship.
4. **TRINITIZED CUSTODIANS** - Ascendant seraphim and translated midway creatures.
5. **TRINITIZED AMBASSADORS** - Spirit- and Son-Fused mortals of superior minds.
6. **CELESTIAL GUARDIANS** - Creature-trinitized Sons having served with Trinity Teacher Sons
7. **HIGH SON ASSISTANTS** - Retrinitized trinitized Sons and associated Paradise Havona personalities.



TRINITIZED SONS OF ATTAINMENT
(Father-fused mortal ascenders)

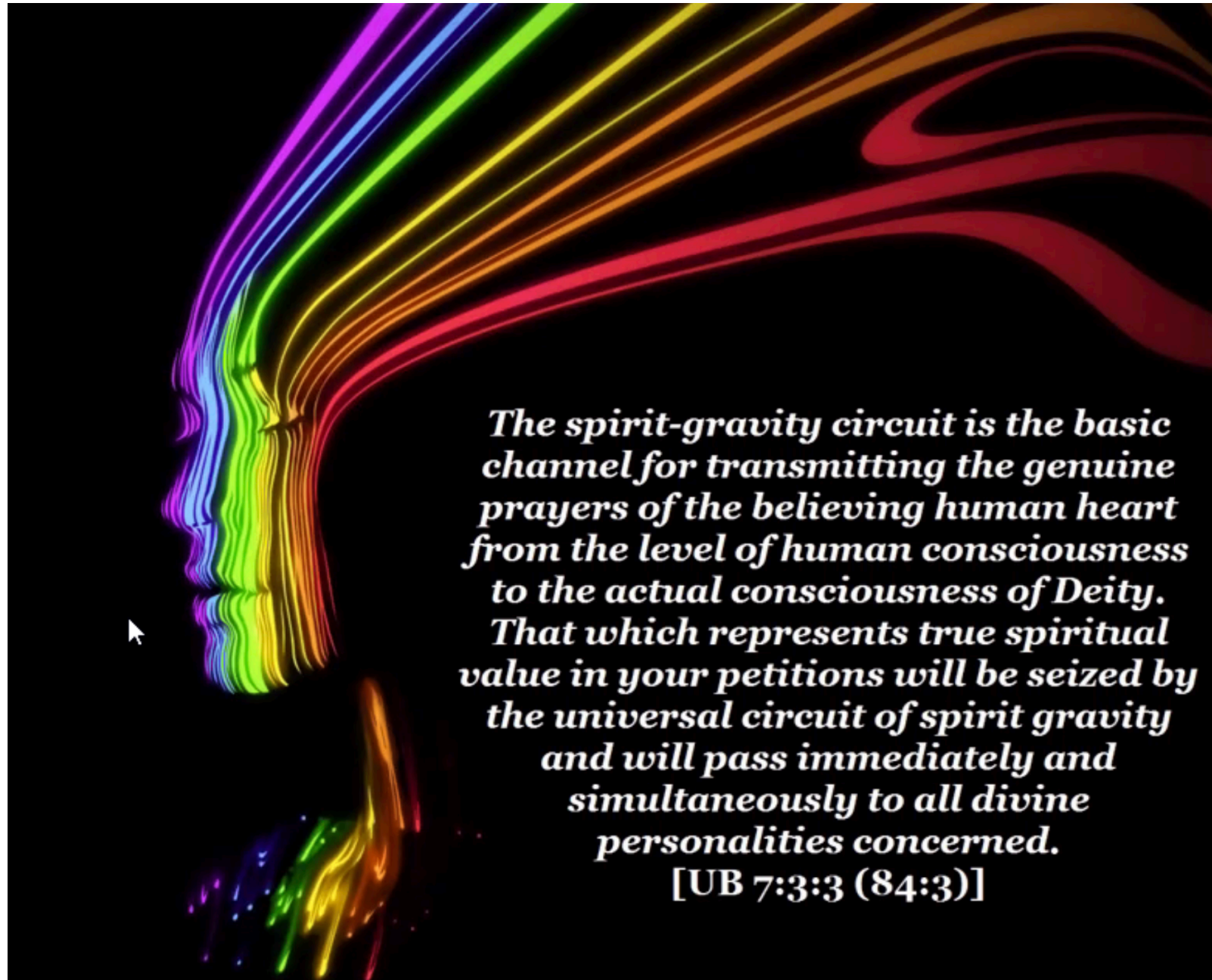


TRINITIZED SONS OF SELECTION



TRINITIZED SONS OF PERFECTION

These seven groups of personalities are further classified, according to origin, nature, and function, into three major divisions: the **TRINITIZED SONS OF ATTAINMENT**, the **TRINITIZED SONS OF SELECTION**, and the **TRINITIZED SONS OF PERFECTION**. [UB 22:1:1-9]



The spirit-gravity circuit is the basic channel for transmitting the genuine prayers of the believing human heart from the level of human consciousness to the actual consciousness of Deity.

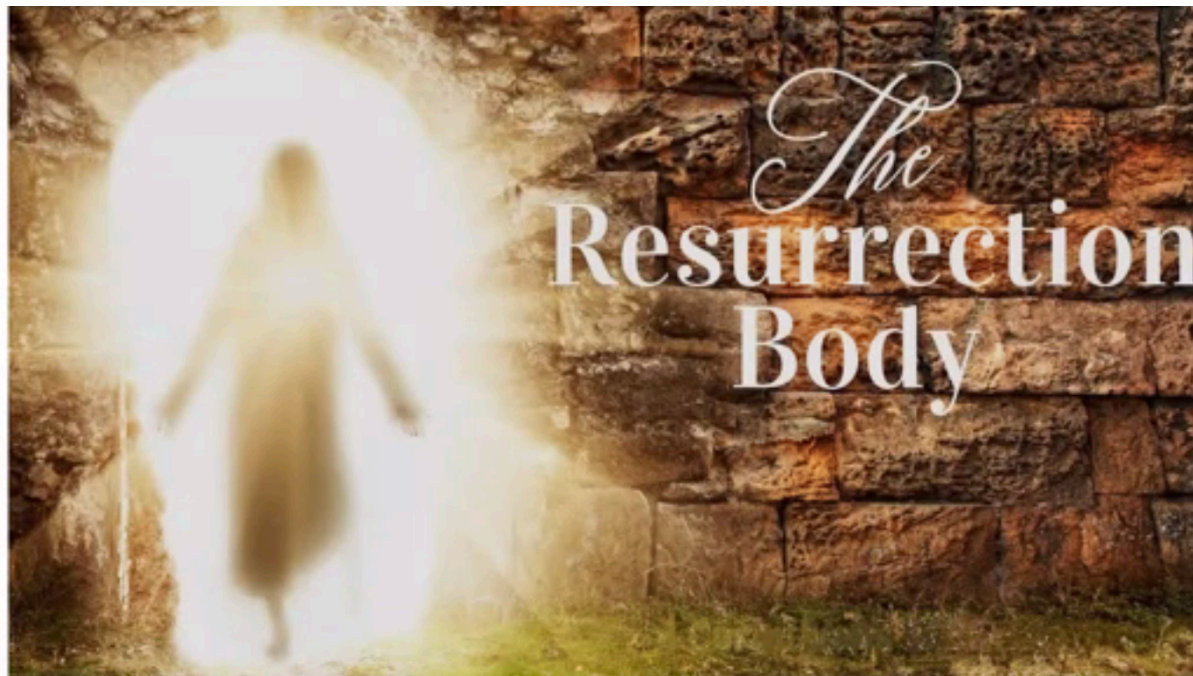
That which represents true spiritual value in your petitions will be seized by the universal circuit of spirit gravity and will pass immediately and simultaneously to all divine personalities concerned.

[UB 7:3:3 (84:3)]

*There is also here with me **A MIGHTY MESSENGER FROM UVERSA, AN ASCENDANT ADJUSTER-FUSED, ONETIME MORTAL BEING**, and he perceives you as you are, and at the same time he visualizes the Solitary Messenger, the supernaphim, and other celestial beings present. **NEVER IN YOUR LONG ASCENDANCY WILL YOU LOSE THE POWER TO RECOGNIZE YOUR ASSOCIATES OF FORMER EXISTENCES.** Always, as you ascend inward in the scale of life, will you **RETAIN THE ABILITY TO RECOGNIZE AND FRATERNIZE WITH THE FELLOW BEINGS OF YOUR PREVIOUS AND LOWER LEVELS OF EXPERIENCE.** Each new translation or resurrection will add one more group of spirit beings to your vision range without in the least depriving you of the ability to recognize your friends and fellows of former estates.*



*All this is made possible in the experience of ascending mortals by **THE ACTION OF THE INDWELLING THOUGHT ADJUSTERS.** Through **THEIR RETENTION OF THE DUPLICATES OF YOUR ENTIRE LIFE'S EXPERIENCES**, you are assured of **NEVER LOSING ANY TRUE ATTRIBUTE YOU ONCE HAD**; and these Adjusters are going through with you, as a part of you, in reality, as you. **[UB 44:0.11,12]***

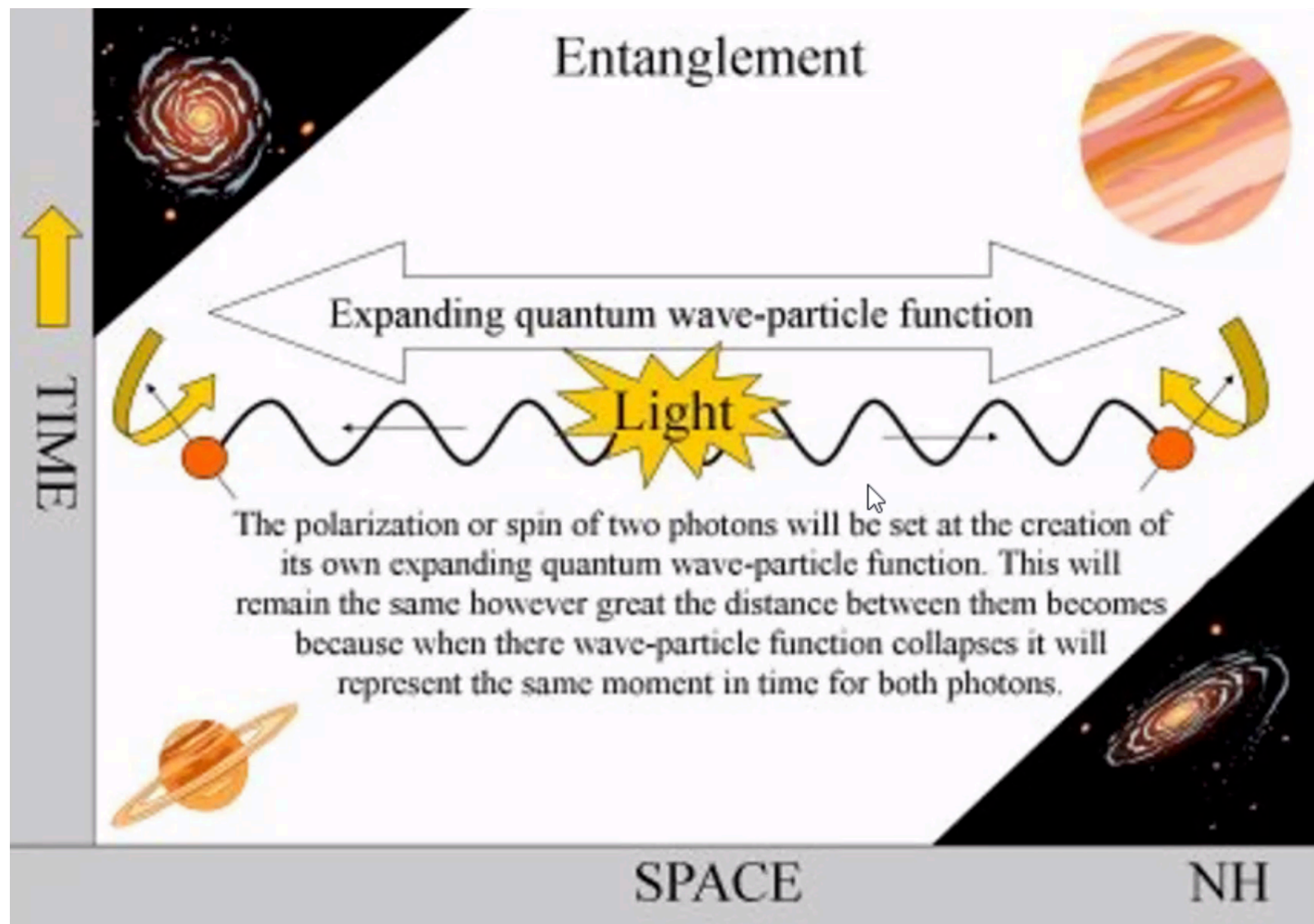


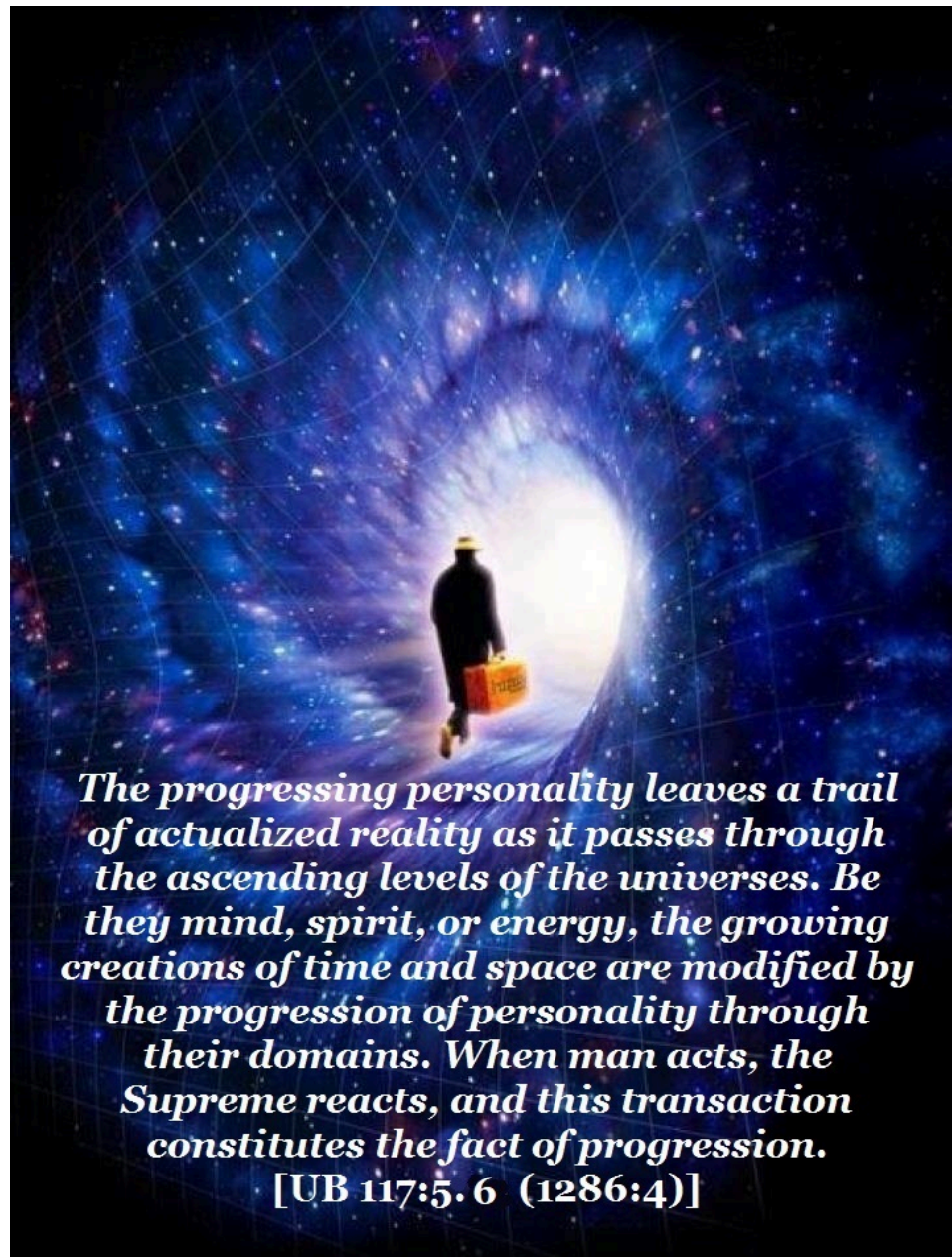
The **PHYSICAL BODY** of mortal flesh is not a part of the reassembly of the sleeping survivor; the **PHYSICAL BODY** has returned to dust. THE SERAPHIM OF ASSIGNMENT **SPONSORS** THE **NEW BODY**, the **MORONTIA FORM**, as the new **LIFE VEHICLE** for THE IMMORTAL SOUL AND FOR THE INDWELLING OF THE RETURNED ADJUSTER.

[UB 30:4.15]

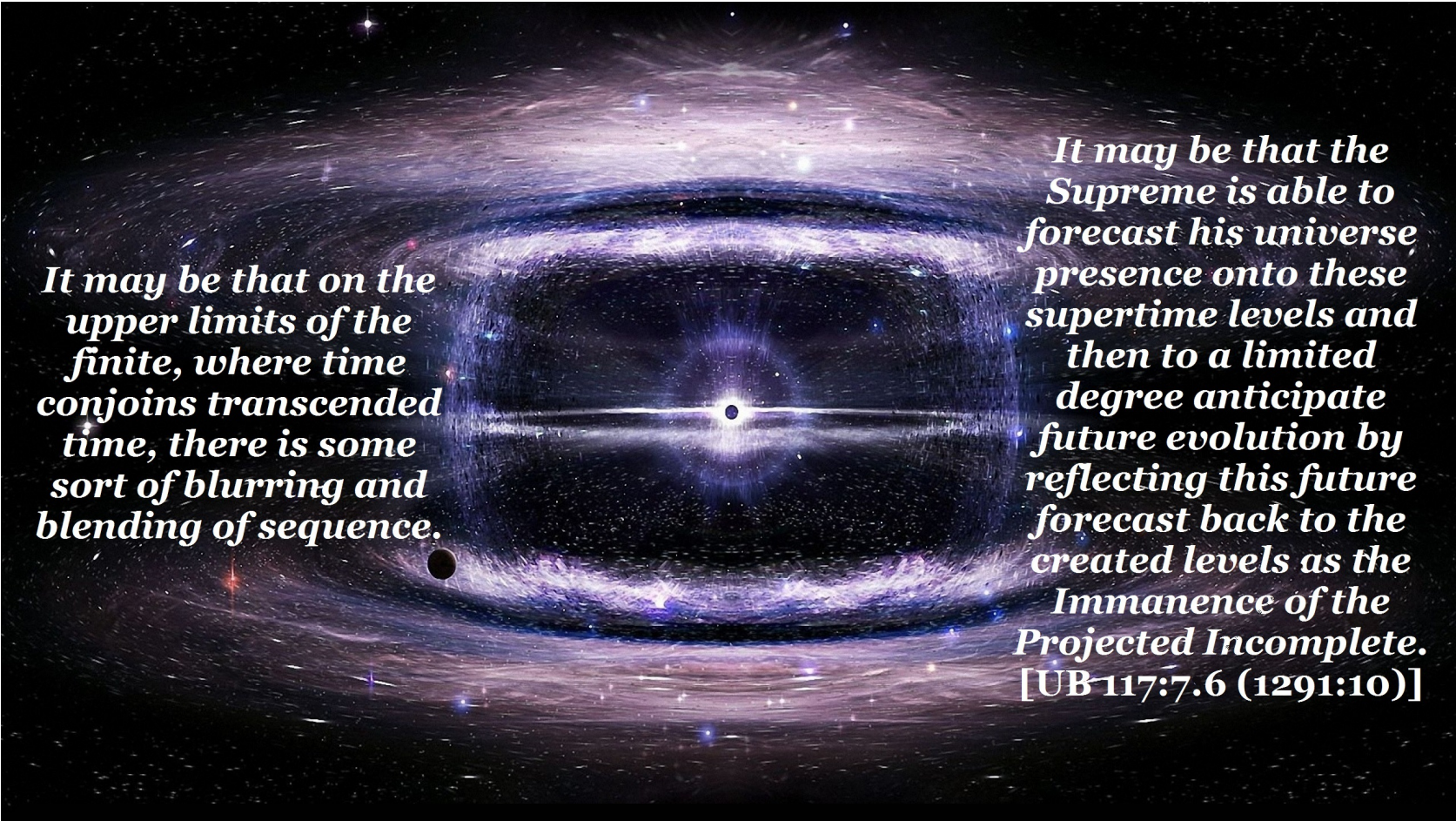
The MORONTIA POWER SUPERVISORS **SPONSOR**, and the ATTENDING SERAPHIM **PROVIDE**, THE **UNDIFFERENTIATED MORONTIA MATERIAL** wherewith the morontia life can begin to work. [UB 42:12.11]

It is indeed an epoch in the career of an ascending mortal, THIS FIRST **AWAKENING** ON THE SHORES OF THE MANSION WORLD; there, FOR THE FIRST TIME, ACTUALLY TO **SEE** YOUR LONG-LOVED AND EVER-PRESENT **ANGELIC COMPANIONS** OF EARTH DAYS [UB 113:7.1]





The progressing personality leaves a trail of actualized reality as it passes through the ascending levels of the universes. Be they mind, spirit, or energy, the growing creations of time and space are modified by the progression of personality through their domains. When man acts, the Supreme reacts, and this transaction constitutes the fact of progression.
[UB 117:5.6 (1286:4)]



*It may be that on the
upper limits of the
finite, where time
conjoins transcended
time, there is some
sort of blurring and
blending of sequence.*

*It may be that the
Supreme is able to
forecast his universe
presence onto these
supertime levels and
then to a limited
degree anticipate
future evolution by
reflecting this future
forecast back to the
created levels as the
Immanence of the
Projected Incomplete.
[UB-117:7.6 (1291:10)]*



There is a providence in the evolving universes, and it can be discovered by creatures to just the extent that they have attained capacity to perceive the purpose of the evolving universes. [UB 118:10:10 (1305:5)]